

D020K

ECONOMY 20,000 LBS. GAWR



DON®

FOR TRUCK, TRACTOR & TRAILER APPLICATIONS

- D020K is specially designed for providing a multi application lining for **over the highway and line-haul applications** at an economical price.
- Good value and overall performance.
- Matches FMVSS-121 standards at 20K lbs. axle rating with a 165 AL Factor.
- Material delivers stable and reliable brake performance.
- Good drum & friction wear per TMD O.E. Wear & Temperature test procedure (TMD O.E. W/T Test).

FMVSS-121 CONDITIONS:

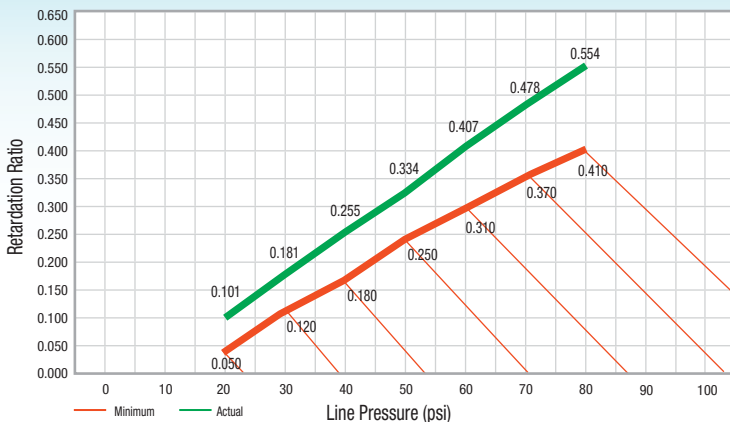
Axle Rating: 20,000 lbs. | Brake Size: 4707 16.5x7
AL Factor: 165 | Rolling Radius: 20.8 inch

WEAR CONDITIONS:

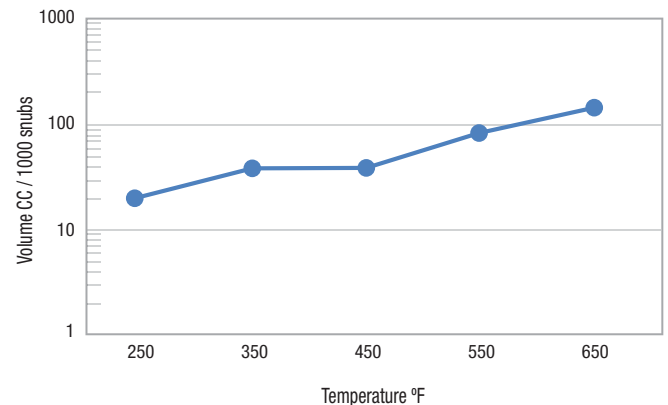
Axle Rating: 20,000 lbs. | Brake Size: 4707 16.5x7
AL Factor: 165 | Rolling Radius: 19.7 inch



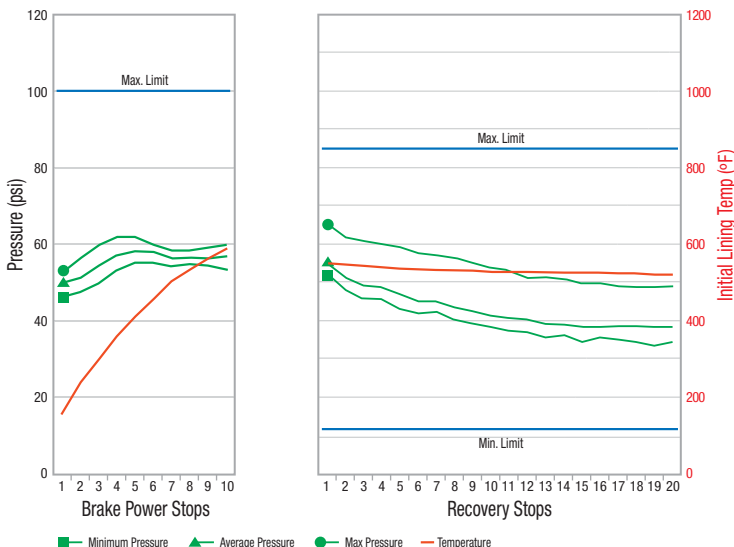
RETARDATION



TMD O.E. W/T TEST



BRAKE POWER & RECOVERY



FRICITION PROPERTIES

Gogan hardness	27
Specific gravity	1.91 gr/cm ³
Transverse Rupture Strength	5,000 psi min.

SAE J661A

Normal friction CoF	0.450 F
Hot friction CoF	0.429 F

O.E. OR O.E.S. PROGRAM APPROVED





Performance similar to

Abex VL 20 • Meritor EG • Bendix BB200 • Stemco Duroline Horizon SP20
Frasle 520 • Marathon MV20

	<i>Recommended</i>	<i>Optional</i>	<i>Not recommended</i>
SINGLE TRACTOR / TRAILER	●		
TANDEM TRACTOR TRAILER	●		
MULTIPLE TRAILER		●	
VAN TRAILER	●		
STRAIGHT TRUCK	●		
FLAT BED TRAILER		●	
DRY BULK		●	
LOGGING TRAILER			●
CAR HAULER		●	
LIVESTOCK TRAILER		●	
TANKER			●
CONTAINER CHASSIS		●	
SCHOOL BUS			●
FIRE ENGINE			●
REFUSE TRUCK			●
TANDEM AXLE MIXER			●
SINGLE AXLE DUMP			●
TANDEM AXLE DUMP			●
TRANSIT			●
COACH			●

For further information contact:

TMD FRICTION

A NISSHINBO GROUP COMPANY

**This application guide is described as general reference.
The correct material for your application should be reviewed
with a brake friction professional.*

**Trademark registration in process*